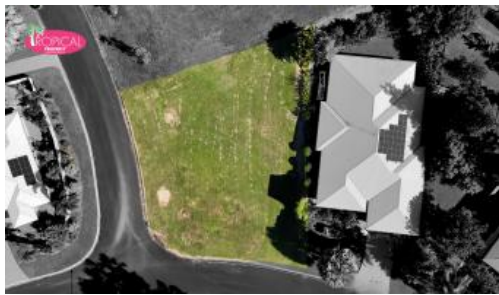




**32 Pacific View Dr, Wongaling Beach**



## Prestige Corner Block in Mission Hills Estate – Sea Breezes & Beachside Lifestyle

- \* Corner block
- \* Slightly elevated with underground services
- \* Approximately 400m to the beach
- \* Quiet, cul-de-sac location

Embrace the tropical North Queensland lifestyle with this premium 802m<sup>2</sup> corner block, perfectly positioned in the heart of Mission Hills Estate at Wongaling Beach. Set in a peaceful cul-de-sac, this slightly elevated allotment captures ocean breezes and glimpses of the Coral Sea, offering the ideal canvas for a coastal dream home or boutique development.

The block features two street frontages and is fully serviced with underground power, town water, and sewerage, providing flexibility in design and future use. Its elevation not only allows for potential sea views but also enhances the flow of natural breezes throughout.

Mission Hills Estate is accessed through a dramatic, palm-lined boulevard reminiscent of classic Hollywood glamour. Positioned midway between the Village Green and the renowned Elandra Resort, and with the much-anticipated iconic Scottie's opening soon, the estate is at the centre of a growing and vibrant beachside community. Just offshore, Dunk Island is once again a destination of note, with its restaurant now open, adding to the area's allure.

A short six-minute stroll takes you to the pristine sands of Wongaling Beach, where 14 kilometres of uninterrupted coastline connects Mission to South Mission Beach. The spectacular views of Dunk Island and the Family

803 m<sup>2</sup>

**Price** \$205k Prestige Corner Block ~ Sea Breezes

**Property Type** Residential

**Property ID** 3400

**Land Area** 803 m<sup>2</sup>

### Agent Details

Candice Thorley - 0439980139

### Office Details

Tropical Property Sales  
Shop 2, 2-4 Stephens Street  
Mission Beach QLD 4852 Australia  
07 4088 6880



Islands provide a daily reminder of the region's natural beauty. Surrounding rainforest pockets are home to native cassowaries, enriching the tropical lifestyle with rare wildlife encounters.

Mission Hills offers easy access to everything you need: Woolworths Shopping Centre, Medical Centre, a local primary school, daycare services, restaurants, all within convenient walking distance.

With so much momentum building in Mission Beach, now is a smart time to invest. Whether you're looking to build your forever home or secure a block with long-term development potential, this property offers lifestyle, location, and future value in one.

~ Cassowary Coast Council Rates: Approx. \$2,000 per 6 months

---

Where coastal living begins ~ brought to you exclusively by Candice @ Tropical Property.

*The above information provided has been furnished to us by the vendor/s. We have not verified whether or not that information is accurate and do not have any belief in one way or the other in its accuracy. We do not accept any responsibility to any person for its accuracy and do no more than pass it on. All interested parties should make and rely upon their own inquiries in order to determine whether or not this information is in fact accurate.*