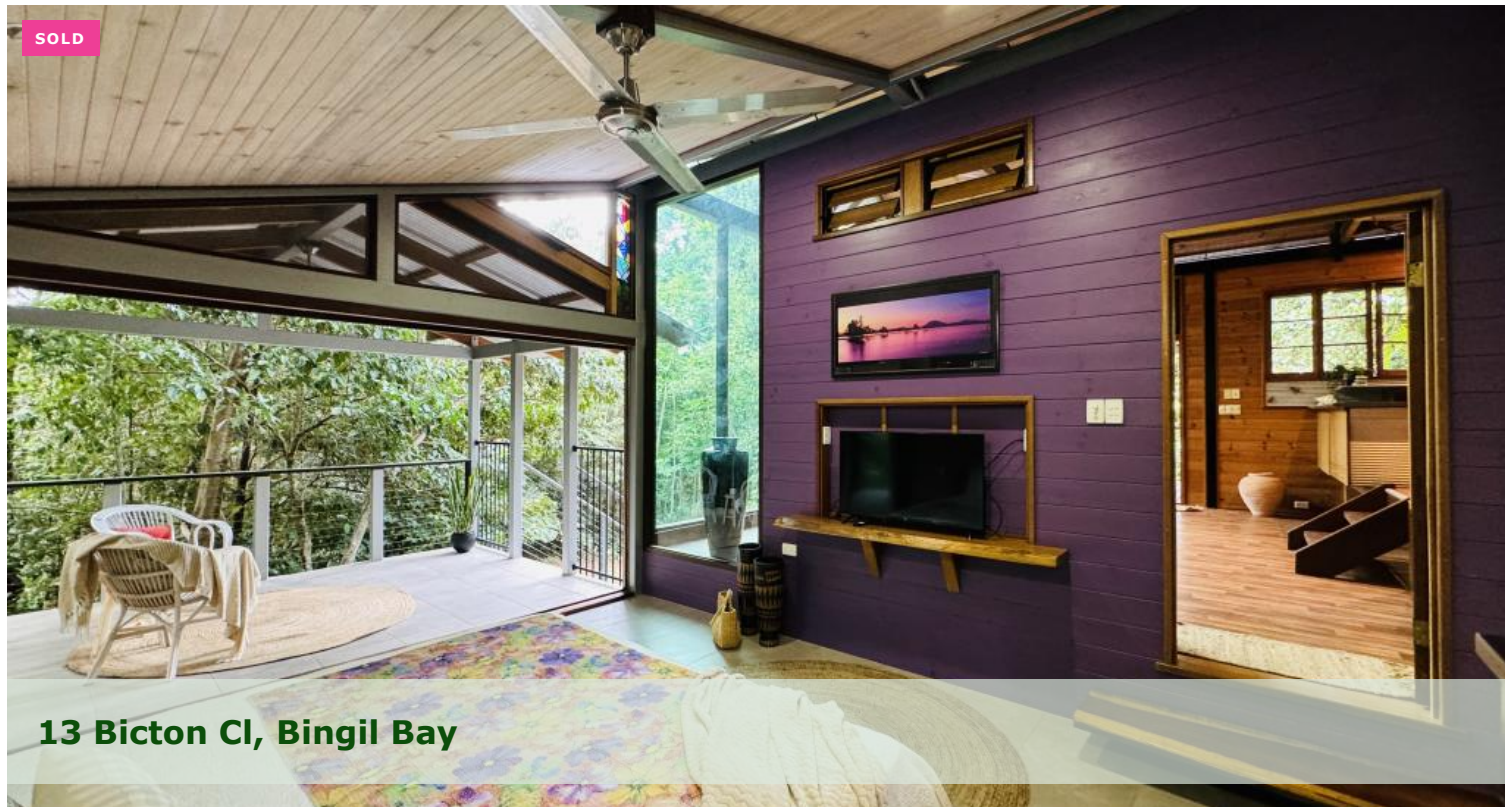


SOLD



13 Bicton Cl, Bingil Bay



## One-Of-A Kind Holiday Home Set in The Beautiful Bingil Bay Rainforest !

- \* First time available for sale !
- \* Built 2005 and well maintained
- \* Tucked away on half of acre in privacy
- \* You'll love this one !

Escape to a one-of-a-kind holiday home nestled on over half an acre of lush rainforest in Bingil Bay. For the first time ever, this enchanting retreat is now available for sale, offering a blend of quality timbers, steel, and glass that form a magical abode brimming with love and character.

Step into a world where the boundaries between indoor living and outdoor beauty blur seamlessly. This stunning holiday home offers a spacious open-plan living area with a raised kitchen that invites you to become one with the rainforest. Six expansive glass panels, towering at approximately 4 meters high, frame the lush, well-maintained rainforest, allowing you to feel truly connected to nature's embrace!

The master bedroom, a sanctuary of comfort and tranquility, boasts an oversized layout and opens onto a private deck via bi-fold doors. Revel in the special touches that adorn this retreat, from the vibrant colorful stained glass inserts to the corner glass wall that offers a glimpse of the majestic tree around which the house was artfully built around.

Relish in the serenity of outdoor living with a second deck off the living area, perfect for relaxation and entertainment. The main bathroom is a sanctuary in itself, featuring a shower over a spa tub and a discreet viewing window that offers a unique perspective of the surrounding beauty in complete privacy.

🛏 2 🚿 2 🚗 2 📏 2,177 m2

**Price** SOLD for \$567,500  
**Property Type** Residential  
**Property ID** 2836  
**Land Area** 2,177 m2

### Agent Details

Tania Steele - 0448 250 499

### Office Details

Tropical Property Sales  
Shop 2, 2-4 Stephens Street  
Mission Beach QLD 4852 Australia  
07 4088 6880



Venture downstairs to discover a second ensuite bedroom, ideal for guests or family members seeking their own private haven. The paved area under the deck presents opportunities for additional outdoor living spaces or the potential to enclose and create another cozy retreat.

An outdoor laundry and a lock-up workshop round out the lower level, offering convenience and functionality for your lifestyle needs.

Experience the magic of living in harmony with nature, where every corner of this exceptional home tells a story of craftsmanship, comfort, and connection to the beauty of Bingil Bay's rainforest!

Marketed exclusively by Tania @ Tropical Property - Looking forward to showing you this special home!

*The above information provided has been furnished to us by the vendor/s. We have not verified whether or not that information is accurate and do not have any belief in one way or the other in its accuracy. We do not accept any responsibility to any person for its accuracy and do no more than pass it on. All interested parties should make and rely upon their own inquiries in order to determine whether or not this information is in fact accurate.*