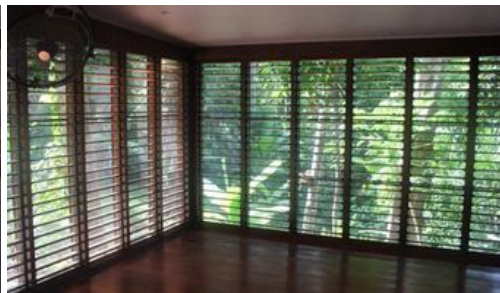




5 Bicton Close, Bingil Bay



Your Own Treehouse !

- * Quaint timber cottage
- * Nestled in the rainforest
- * Tropical fruit garden - and a couple of chilli bushes
- * No neighbours - it's blissful

You'll fall in love with this cottage that overlooks World Heritage Rainforest - your own backyard ! Tropical living at it's best - three sides of the home are completely open to a thousand different shades of green and there's an outdoor patio that kisses the curtain fig - perfect for dining, socialising and 'me' time.

Satisfying all chefs is the choice of two kitchens - and a abundance of herbs and your choice of tropical fruits - and why not grow your own vegetables too. Off the I-shaped lounge room is a separate living area which flows onto the bedroom and ensuite. There is loads of cupboard space, room for a couple of cars and the property is fenced.

Come and take a peak - it's unique !

Proudly marketed by Tropical Property.

The above information provided has been furnished to us by the vendor/s. We have not verified whether or not that information is accurate and do not have any belief in one way or the other in its accuracy. We do not accept any responsibility to any person for its accuracy and do no more than pass it on. All interested parties should make and rely upon their own inquiries in order to determine whether or not this information is in fact accurate.

🛏 1 🚿 1 🚗 2

Price	\$250 pw
Property Type	rental
Property ID	267

Agent Details

Susie England - 0407 195 514

Office Details

Tropical Property Sales
Shop 2, 2-4 Stephens Street
Mission Beach QLD 4852 Australia
07 4088 6880

