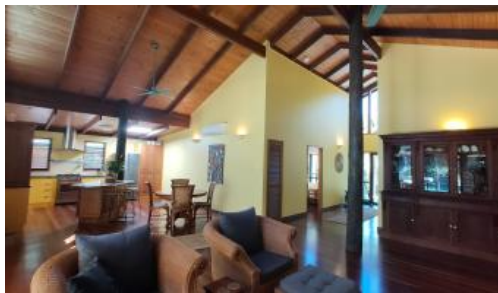


SOLD



Wongaling Beach



Private Rainforest Oasis !

- * Lush tropical manicured gardens
- * In-ground waterfall pool
- * Immaculately maintained
- * Centrally located between Mission Beach & Wongaling Beach

Sitting on 2 acres, architecturally designed for our tropical lifestyle and built by local builder, Ken Fox Homes, you will fall in love with this timber home nestled up a private driveway and surrounded by rainforest.

After you meander your way along the stone curved driveway, a wide timber staircase welcomes you to the front entrance into a spacious hallway, soaring high ceilings and cathedral windows. Polished timber floors lead you down the hallway to the heart of the home and then out through sliding glass doors onto a large undercover deck overlooking the inground pool and waterfall. Manicured gardens flow around the home and pool area dotted by the occasional towering palm tree.

The open living area - lounge, kitchen and dining spaces - overlooks the back deck and pool area. It's a lovely room with filtered light, the timber ceilings and smooth solid timber support beams. The kitchen has a gas stove, dishwasher, room for a French door fridge and a full size pantry. The kitchen island eating bench is great for casual dining and there's also room for a dining room table and chairs. That's if you choose not to eat most of your meals on the deck outside - where I think you'll spend most of your time !

Off the lounge room is the main bathroom and the third bedroom with private access to the rear deck and laundry, which has a separate toilet as well.

3 2 3 8,004 m2

Price SOLD for \$700,000
Property Type Residential
Property ID 1956
Land Area 8,004 m2

Agent Details

Susie England - 0407 195 514

Office Details

Tropical Property Sales
Shop 2, 2-4 Stephens Street
Mission Beach QLD 4852 Australia
07 4088 6880



The main bedroom has a walk in robe and ensuite and is situated at the other end of the home; the second bedroom is opposite the main bedroom. Both rooms have timber louvers and windows overlooking the front timber deck.

The home is fully air conditioned with crim safe screens on the sliding glass doors and windows.

Outside, there is a triple carport, large lockable storage area and a separate garden shed.

You'll also be pleasantly surprised to find that from your private retreat, you can walk to the beach and it's only a few minutes drive to Woolworth's, cafes and restaurants.

Call Susie to arrange a time for a private viewing through this very special home.

The above information provided has been furnished to us by the vendor/s. We have not verified whether or not that information is accurate and do not have any belief in one way or the other in its accuracy. We do not accept any responsibility to any person for its accuracy and do no more than pass it on. All interested parties should make and rely upon their own inquiries in order to determine whether or not this information is in fact accurate.