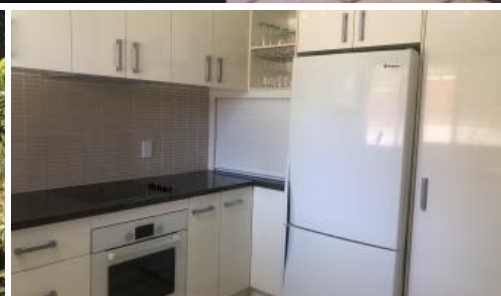


LEASED



## Unit 4, 42 Mitchell St, South Mission Beach



### Lasting Impression !

- \* Tropical parklike gardens
- \* Private inground pool
- \* Spacious townhouse
- \* Private courtyard area

Just a couple of minutes to the beach from this well appointed townhouse set amongst lush tropical gardens.

Spacious and light, fully air conditioned with fans and screens, downstairs you'll find a lounge/dining area with two sets of sliding doors leading out to the gardens and your own fenced private courtyard area - equipped with an electric plantation louver roof ! The kitchen is a great size for a unit with lots of cupboard space, a dishwasher and full size fridge. The laundry and a separate toilet are located off the kitchen area with access to your own clothesline.

Upstairs you'll find polished timber floors throughout the two bedrooms - the main bedroom has a lovely outlook over the garden and both rooms have built in robes. Additional storage is located under the stairs and there is a linen cupboard off the main bathroom and more storage space in the laundry.

The undercover carport is off the courtyard area but you can access it from the kitchen area as well.

The townhouse is fully furnished; please contact us for a full inventory list.

Inspections welcome by appointment - call Sue on 0473 195 514.

🛏 2 🚿 1 🚗 1

<b>Price</b>	\$320 pw
<b>Property Type</b>	Rental
<b>Property ID</b>	1923

### Agent Details

Sue Conaghty - 07 4088 6880  
Susie England - 0407 195 514

### Office Details

Tropical Property Sales  
Shop 2, 2-4 Stephens Street  
Mission Beach QLD 4852 Australia  
07 4088 6880



The above information provided has been furnished to us by the vendor/s. We have not verified whether or not that information is accurate and do not have any belief in one way or the other in its accuracy. We do not accept any responsibility to any person for its accuracy and do no more than pass it on. All interested parties should make and

*rely upon their own inquiries in order to determine whether or not this information is in fact accurate.*